

Bibliography

Andersson, Eva (2006) Kläderna och människan i medeltidens Sverige och Norge. Historiska Institutionen, Göteborgs Universitet, Göteborg.

Crowfoot, Elizabeth; Pritchard Frances; Staniland Kay (2001) Textiles and Clothing 1150-1450. Boydell Press, Woodbridge.

Franzen, Anne-Marie (1997) Prydnadssömmar under medeltiden. Kungliga Vitterhets historie och antikvitets akademien, Stockholm.

Grinder-Hansen, Poul (2002) Danish Middle Ages and Renaissance. Nationalmuseet, Copenhagen.

Nockert, Margareta (1997) Bockstensmannen och hans dräkt. Stiftelsen Hallands Läns museer, Halmstad and Varberg.

Staniland, Kay (1997) Medieval Craftsmen. Embroiderers. British Museum Press, London.

Østergård, Else (2004) Woven into the Earth. Textiles from Norse Greenland. Aarhus University Press, Aarhus.

Other sources

Personal examination of the Icelandic antepedia done in refillsaumur-technique. National Museum Of Denmark, 2004.

Romance of Alexander MS. Bodl. 264

<http://image.ox.ac.uk/show?collection=bodleian&manuscript=msbodl264> (11.6.2008)

by the Flemish illuminator Jehan de Grise and his workshop, 1338-44; with two sections added in England c. 1400, (fols. 209r-215v, with fol. 1r) *Alexander and Dindimus (Alexander Fragment B)* in Middle English verse, with coarser miniatures, and (fols. 218r- 71v, with fol. 2v) *Marco Polo, Li Livres du Graunt Caam*, in French prose, with miniatures by Johannes and his school.

Pictures:

Fig 1: Line drawing and picture of hood no. 66 / D 10597 (Nockert 1997, 97)

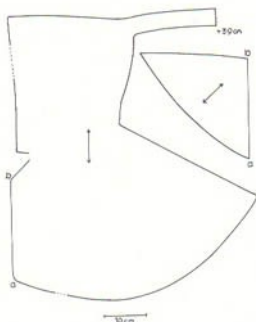


Fig. 90. Herjolfsnes nr 66.
Mönsterritning: E. Østergård.
Herjolfsnes No. 66. Pattern
drawing by E. Østergård.



Fig 2: Extant hood no. D 10597 in it's present state (Østergård 2004, 204)



Fig 3: Buttoned hood on a woman, Romance of Alexander folio 171r



Fig 4: Ingeborg Bengtsdotter's tombstone form Uppsala cathedral (Andersson 2006, 101)



Fig 5: London hood pattern ((Crowfoot et. al. 2001, 190-191)

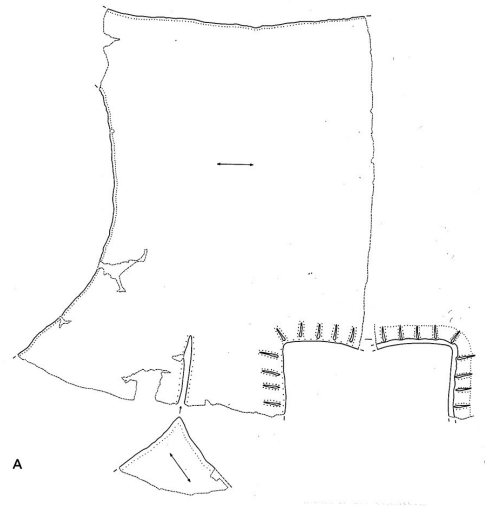


Fig 6: Button and buttonhole sewing techniques (Crowfoot et. al. 2001, 170-171)

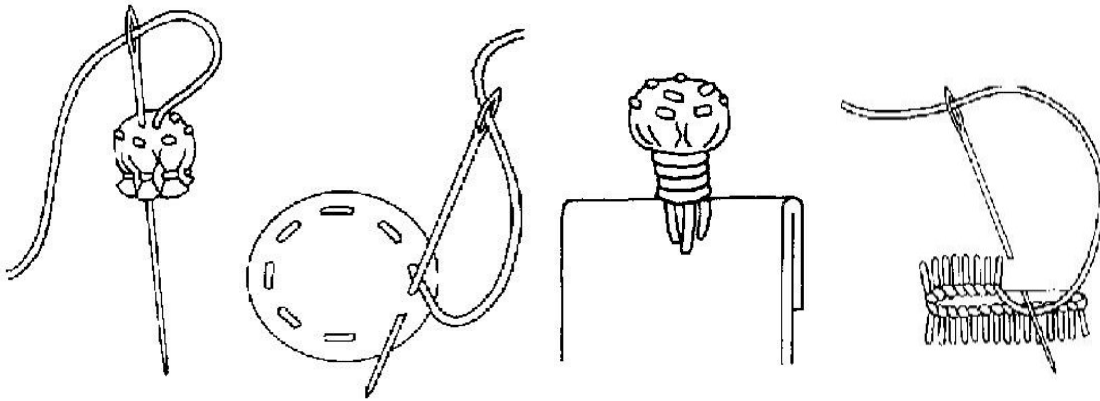


Fig 7: Icelandic antependium, National Museum of Denmark (Grinder-Hansen 2002, 93)



Fig 8: Detail, Icelandic antependium, National Museum of Denmark (Grinder-Hansen 2002, 93)

